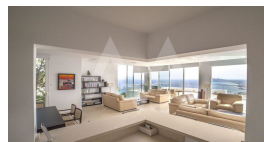
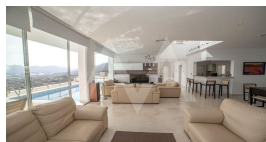
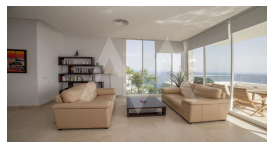
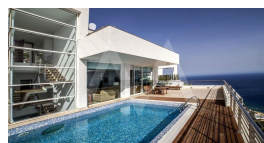
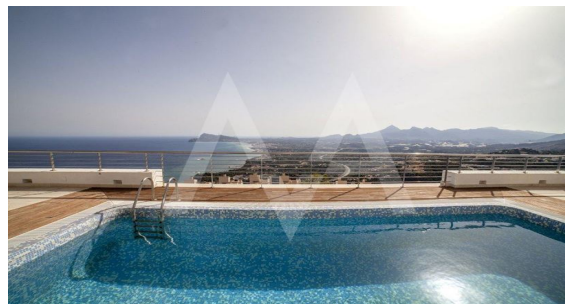
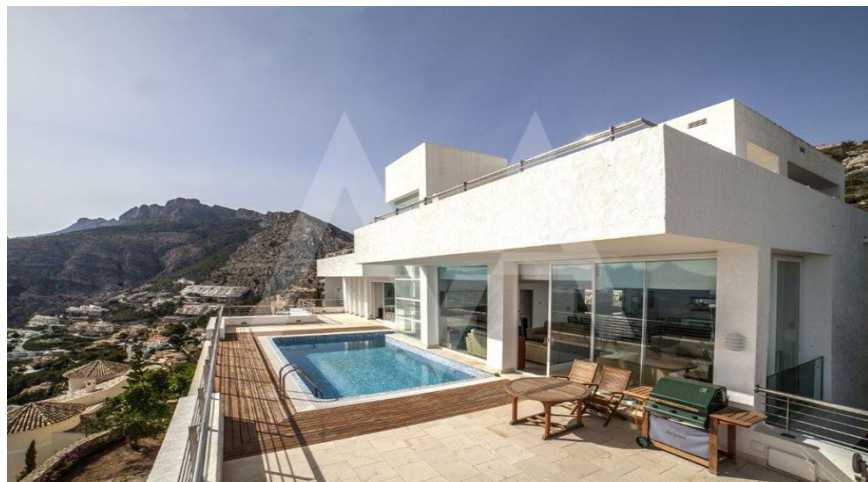


## RV2121ALT02

Nice Villa With Panoramic Views In Altea Hills

Altea

**ON REQUEST**



### Property features

Alarm  
Armored Door  
Built-in Wardrobes  
Carport  
Double Glass Windows  
Electric Blinds  
Elevator  
Internet Connection  
Jacuzzi  
Laundry Room  
Outside Shower  
Sauna  
Technical Room  
Tv Satellite  
Wifi

### Community features

15 Min Beach  
15 Min Market  
15 Min Shops  
Concierge  
Controlled Access  
Disabled Access  
Elevator  
Game Area  
Gardens  
Golf Court  
Gym  
Hotel  
Indoor Swimming Pool  
Jacuzzi  
Paddle Court  
Parking  
Social Club  
Swimming Pool  
Tennis Court

### Property details

Built size	<b>307 m2</b>
Plot size	<b>1165 m2</b>
Bedrooms	<b>3</b>
Bathrooms	<b>3</b>
City	<b>Altea</b>
Build	<b>-</b>
Orientation	<b>S-W</b>
View	<b>Sea, Mountain, Panoramic</b>
Distance Airport	
Distance Sea	<b>60 km</b>
Distance Shops	<b>2500 m</b>
Dist. City Centre	<b>3 km</b>
	<b>3 km</b>



**Meg van Amstel**  
T. +34 966 88 01 31  
M. +34 607 22 11 33  
E. info@megvanamstel.com  
W. www.megvanamstel.com

**Office :**  
C/ Conde de Altea, 68 - Lc 1  
Altea

*These details are intended as a guide and do not form part of a contract.*