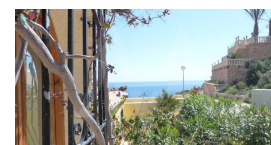
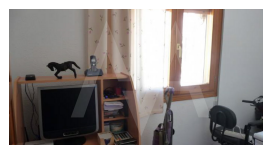
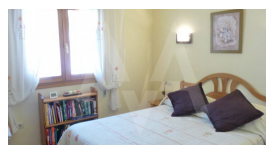
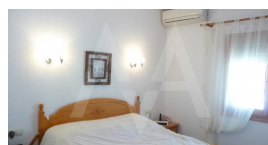
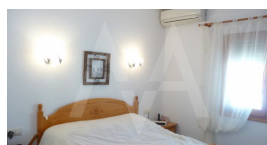


**RV1556BE**  
Nice Villa In Cumbre Del Sol

**Benitachell**  
**€ 150.000**



**Property features**

- Barbecue
- Built-in Wardrobes
- Carport
- Furnished
- Garage
- Parking Off Road
- Furnished
- Tv Satellite

**Community features**

- 15 Min Beach
- 15 Min Market
- 15 Min Shops
- Gym
- Paddle Court
- Parking
- Social Club
- Sport Center
- Swimming Pool
- Tennis Court

**Property details**

Built size	<b>110 m2</b>
Plot size	<b>354 m2</b>
Bedrooms	<b>4</b>
Bathrooms	<b>2</b>
City	<b>Benitachell</b>
Build	<b>2004</b>
Orientation	<b>South</b>
View	<b>Sea</b>
Distance Airport	<b>75 km</b>
Distance Sea	<b>3000 m</b>
Distance Shops	<b>1 km</b>
Dist. City Centre	<b>1 km</b>



**Meg van Amstel**  
T. +34 966 88 01 31  
M. +34 607 22 11 33  
E. info@megvanamstel.com  
W. www.megvanamstel.com

**Office :**  
C/ Conde de Altea, 68 - Lc 1  
Altea

*These details are intended as a guide and do not form part of a contract.*