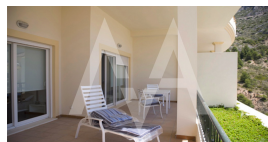
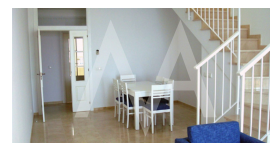
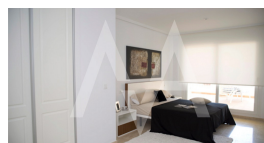


**RA1452ALT**  
Groundfloor Duplex Apartments

**Altea Hills**  
**SOLD**



**Property features**

Alarm  
Armored Door  
Built-in Wardrobes  
Carport  
Video Surveillance

**Community features**

Controlled Access  
Direct Beach Access  
Swimming Pool

**Property details**

Built size **91 m2**  
Plot size **0 m2**  
Bedrooms **1**  
Bathrooms **1**

City **Altea Hills**  
Build **2000**  
Orientation **-**  
View **Sea, Mountain**

Distance Airport **-**  
Distance Sea **-**  
Distance Shops **-**  
Dist. City Centre **-**



**Meg van Amstel**  
T. +34 966 88 01 31  
M. +34 607 22 11 33  
E. info@megvanamstel.com  
W. www.megvanamstel.com

**Office :**  
C/ Conde de Altea, 68 - Lc 1  
Altea

*These details are intended as a guide and do not form part of a contract.*