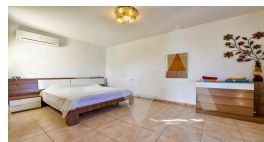
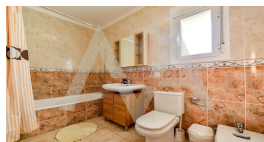
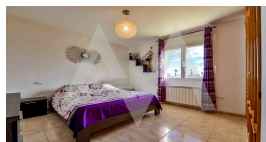


RV2419CAL-C1100

Villa With Views Of The Peñon De Ifach

CALPE

€ 550.000



Property features

- Alarm
- Armored Door
- Barbecue
- Built-in Wardrobes
- Garage
- Outside Kitchen
- Private Parking

Community features

- Barbecue
- Game Area
- Gardens
- Gym
- Hotel
- Parking
- Public Transport

Property details

Built size	235 m2
Plot size	1000 m2
Bedrooms	4
Bathrooms	4
City	CALPE
Build	-
Orientation	S-E
View	Sea, Mountain, Panoramic
Distance Airport	
Distance Sea	60 km
Distance Shops	1000 m
Dist. City Centre	1 km
	1 km



Meg van Amstel
T. +34 966 88 01 31
M. +34 607 22 11 33
E. info@megvanamstel.com
W. www.megvanamstel.com

Office :
C/ Conde de Altea, 68 - Lc 1
Altea

These details are intended as a guide and do not form part of a contract.