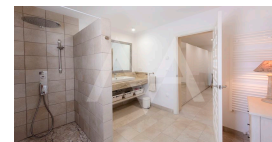
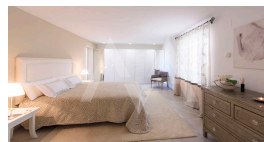
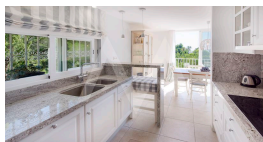
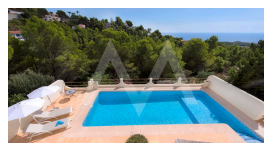
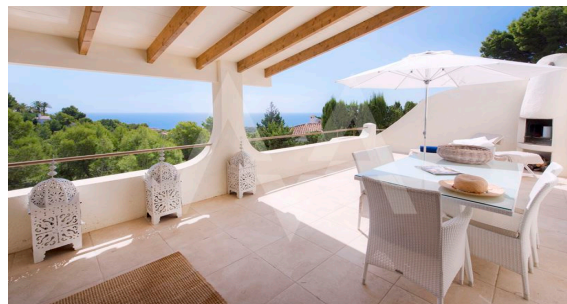
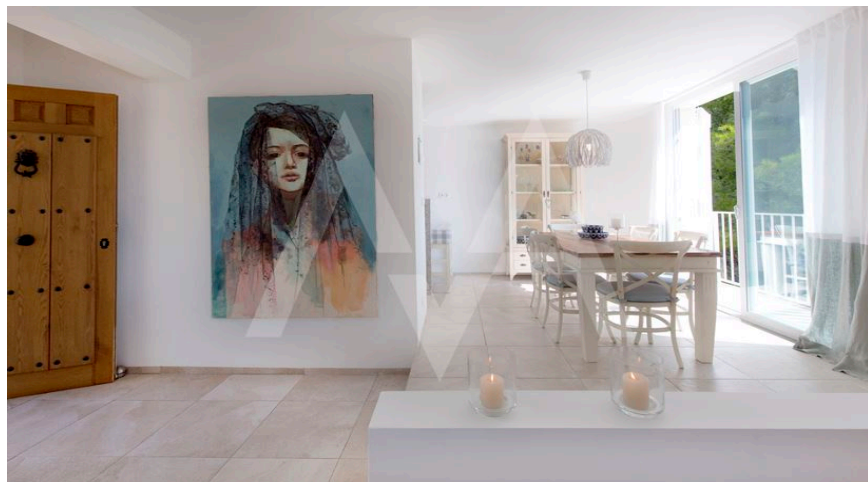


**RV2235ALT02**  
Beautiful Villa In Sierra Altea

Altea  
**ON REQUEST**



**Property features**

Alarm  
Armored Door  
Barbecue  
Built-in Wardrobes  
Carport  
Centralised Security  
Double Glass Windows  
Dressing Room  
Furnished  
Internet Connection  
Outside Shower  
Private Parking  
Reformed  
Storage Room  
Technical Room  
Wifi

**Community features**

15 Min Beach  
15 Min Market  
15 Min Shops  
Game Area  
Gardens  
Golf Court  
Gym  
Hotel  
Indoor Swimming Pool  
Jacuzzi  
Paddle Court  
Parking  
Social Club  
Sport Center  
Swimming Pool  
Tennis Court

**Property details**

|                   |                       |
|-------------------|-----------------------|
| Built size        | <b>150 m2</b>         |
| Plot size         | <b>1800 m2</b>        |
| Bedrooms          | <b>3</b>              |
| Bathrooms         | <b>3</b>              |
| City              | <b>Altea</b>          |
| Build             | <b>-</b>              |
| Orientation       | <b>S-E</b>            |
| View              | <b>Sea, Panoramic</b> |
| Distance Airport  | <b>60 km</b>          |
| Distance Sea      | <b>1000 m</b>         |
| Distance Shops    | <b>1 km</b>           |
| Dist. City Centre | <b>1 km</b>           |



**Meg van Amstel**  
T. +34 966 88 01 31  
M. +34 607 22 11 33  
E. info@megvanamstel.com  
W. www.megvanamstel.com

**Office :**  
C/ Conde de Altea, 68 - Lc 1  
Altea

*These details are intended as a guide and do not form part of a contract.*